

The Grapevine



The weather continues to baffle us with vague warmth, high winds, snow, and rain, rain, rain! This has not prevented a lovely show of spring bulbs (and magnificent magnolias!) in gardens and by the roadsides - thanks to everyone for making a dull spring so much brighter. Litter: what a shame some people regard our ditches as bins, so we thank the litter picking group

who did such a great job in March and collected the litter from around the village, dropped by these thoughtless individuals. Thanks also go to the people who do this on a regular basis and keep the ditches clear.

Roads and motoring: The pothole situation in and around the village is of great concern so please keep reporting them, who knows, someone may be picking up the emails at County Hall! If driving past pedestrians please give them a wide berth if there is a puddle nearby, it's bad enough to get rained on let alone drenched by a car!

It is a joy of living in this village that people we meet out walking, or walking the dog, always say hello and often stop to chat, so long may it remain a Hankerton tradition!

Eds.

Deadline for news for the June Grapevine: May 10th 2024

The size and content of The Grapevine depends on the amount of copy we receive from individuals and groups, so please keep the news and events coming in!

All articles, adverts to be sent to: grapevinesn16@aol.com

Or to 21 Follyfield, Hankerton. SN16 9LA

The opinions expressed are the responsibility of the authors.

We reserve the right to edit material.

Nature Diary - April 2024

There are over 250 species of bee in the UK. There is one species of Honeybee, 24 Bumblebee species and the rest are what are termed Solitary bees. The solitary bees do not form colonies (are not social) and the lone female carries out all the work building the nest, provisioning it, and laying the fertilised eggs within (the male did have a role in the last!).

Despite them not living in large colonies they are very important pollinators. I have seen it stated that the pollination effected by one solitary bee is equivalent to 250 honeybees - that's quite a productivity difference. However, like all insects they are suffering from the changes that we are making to their environment, which should concern us as they are such important pollinators.

Identifying the different species obviously takes no small amount of skill and knowledge, but there is one species that you are likely to see, and the female is readily identifiable, and should be about in Spring and early Summer. She is the Tawny Mining Bee (*Andrena fulva*), and she has very bright orange-red hairs on the back of her thorax and abdomen, making her very noticeable. The bee is just over 1 cm long and you will probably notice her flying close to the ground or settled on the vegetation.



As the name suggests she builds a nest, which she alone excavates, to lay her eggs. Each nest will consist of a tunnel with up to 6 chambers, in each of which she will lay a single egg and provision it with nectar and pollen for the hatched larva to feed on, and this will be enough for the larva all the way to pupation. In the case of the Tawny Mining bee, the nest entrance is surrounded by a small volcano of soil particles and is easily seen in lawns or garden borders. Perhaps you have seen them and thought they are the entrances to ant



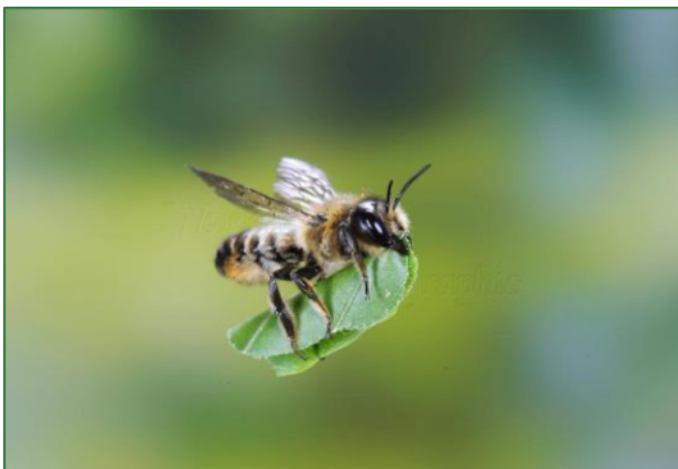
ants nests, but the diameter of the hole is more than ants would need. Sometimes there will be numerous nests in a small area, which indicates that the site is suitably sunny and with the right substrate, and not that it is a colony. There is no cooperation between the females. If you see a single nest or more in the lawn, give a thought to not mowing that patch of grass for fear of crushing the nest, but as the life cycle will not complete for another year you may wish to carefully hand trim that area later in the season.

The male Tawny Mining bee looks much doddier than the female, smaller and lacking the bright colours. The males emerge first in the Spring and await the females in order to mate.

Another species of Solitary bee is the Leaf-cutting bee (*Megachile centuncularis*). Not as identifiable as the Tawny Mining bee, but you may have seen the results of its activities. The female has large jaws for cutting off pieces of leaves to form the individual cells into which she lays her eggs. She overlaps the pieces, a bit like the construction of a cigar, into a sausage shape in a cavity, furnishes it with pollen and nectar (a combination called "bee bread") lays her egg, and caps it with a rounder piece of leaf. The process is repeated a few times so that the tunnel is filled with a series of cells, and next year the outer one will develop and emerge first, allowing the next ones to follow on.



Rose leaves are a particular favourite for the Leaf-cutter bee, and you find that the edges of leaves on your rose bush have circular bits cut out of the margin - sometimes more than one per leaf. I bet you blamed the slugs or weevils for that, didn't you!



One way that you can help these bees is to provide Solitary Bee houses. These come in various designs but offer the bees horizontal cavities into which they can lay their eggs - leafcutter bees, carders and mason bees. There are various designs (a lot of information is available online) and may involve drilled holes into solid wood, stack of lengths of hollow bamboo, and even stacking layers of pre-drilled wood that create tunnels

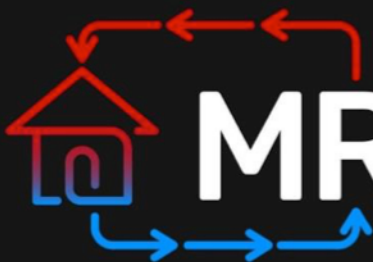
when assembled. The house is hung 1 - 2 metres off the ground in a sunny site. I've made one this year and look forward to seeing if it is to their liking. Different species prefer differing diameter tunnels, and length, so if it does get used I shall have to get my ID guide out and try and identify the satisfied species. Why not try one yourselves? It adds another level of interest to the garden.

Steve Davies.



Malmesbury Garden Centre is a locally run business supplying all your garden requirements. We are still open and have some gorgeous flowers and vegetable plants in, lots of seeds and gardening tools. The staff are very friendly and willing to help you with all your needs. The Cafe food is scrumptious too!

We are open:
Monday to Saturday: 9:00am – 5:00pm
Sunday: 10.00am – 4.00pm



MRB HEATING

**We are Gas safe registered
Gas/Oil Boiler servicing**

For all your plumbing needs just give us a call

M B Plumbing And Heating

Matt Beesley

07921 266211

1 Hillwell, Hankerton

Email: mbplumbing983@gmail.com



minety

community shop

Minety Village Hall Minety SN16 9QH
Tel: 01666 860013 www.minetyshop.co.uk
Weekdays: 8am - 6pm Weekends: 9am - 1pm



New Into Your Shop:

Fresh Meat from Hiscocks our local butcher with special orders on request

Fresh Hobbs-House Bakery bread, pastries & cakes orders taken

Freshly made Bean-to-Cup Coffee and other hot drinks

Local Tracklements Condiments ideal for that special occasion

Local Beers & Mates Cider



Plus all of our usual products:

Off Licence ● Convenience Goods ● Confectionery
Fresh Produce & Frozen Produce
including a range of local & Minety Made products
● Newspapers & Magazines to order ●

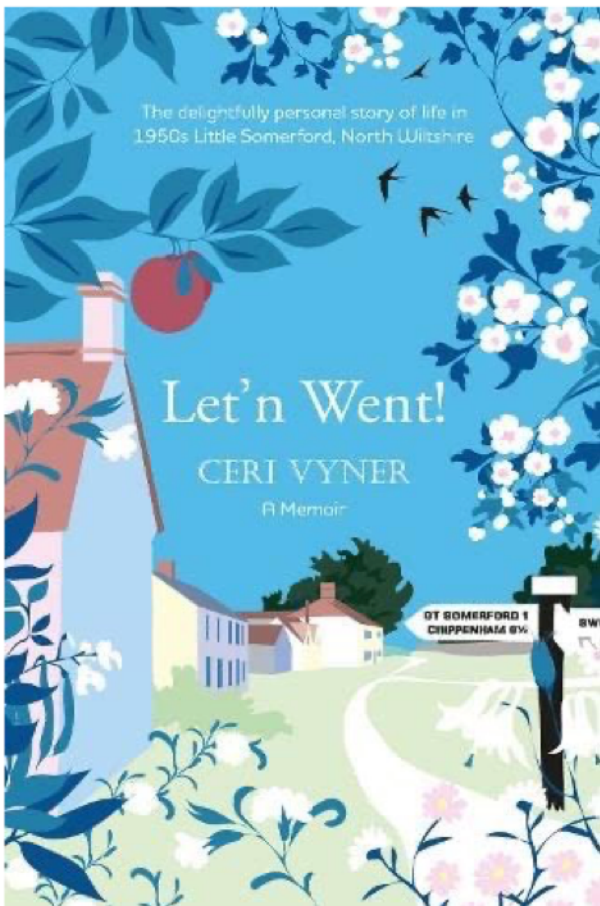
Support your local shop: Did you know if every household spent just £5.00 per week in the shop the future of the shop would be guaranteed. The Minety Shop is a "not for profit" organisation but needs to cover its running costs.

We are always looking for more volunteers to help in the shop or on the committee.

**For more information call
Steve: 07802 3538325 or
Catherine: 07786522455
or email: minetyshop@gmail.com**

Life in Little Somerford 1954-72 Teatime Talk

Wednesday 17th April 2024
Rausing Building, Malmesbury



Ceri Vyner will reveal a bygone era when she talks about life in Little Somerford in the 50's and 60's.

When Ceri and her brothers moved to the North Wiltshire village they discovered a rural place unchanged by modern life.

Her published memoir *Let'n Went* is the basis for her talk which recalls a way of life which, although not so very long ago, seems like another age.

Doors will open at 2.30pm for tea and cake and the talk starts at **3pm**.

Tickets £7.00 (includes tea and cake) are available online (www.athelstanmuseum.org.uk) and in the Athelstan Museum Shop.

Lent Lunch

Thank you to all those who came to the Lent Lunch on Saturday in the North Aisle.

We have donated the proceeds, £50, to the Malmesbury Food Bank.



There was room for more people, so please come to the next village event to meet and chat to your fellow villagers.

Philip Carter,
Churchwarden

Join us for our Special Rogation Sunday Service

Sunday 5th May

4pm

Charlton Church

HANKERTON HOLY CROSS

CHURCHWARDENS REPORT FOR THE YEAR 2023



The main highlight of 2023 was the arrival in September of our new rector Reverend Bob Molton, fully supported by his wife Dee. He was inducted by the Bishop of Bristol in Crudwell church with a large congregation. Our annual service with the biggest attendance was again the December Carols, attended by over 80 people and a small choir. As in previous years, after the service, hot mulled wine and mince pies were consumed in the North Aisle, then people walked home past the splendidly lit Christmas tree,

once again kindly donated by Nick Durnford. Nick also installed another Christmas tree in the North Aisle, which was much enjoyed by the children who came to decorate it. We thank Steve Davies for once again maintaining the north side of the churchyard and lots of people on the cleaning and flower rotas. We also thank Heather Goodwin for continuing as our regular church organist.

On 7th May, the day after the coronation of King Charles, there was a big village celebration lunch in the churchyard, attended by about 90 people. On 30th July, on a wet and very windy day, nearly 60 people enjoyed a Village Tea at The Old School House to help church funds. The marquees and tents did not quite blow over. On 2nd September we launched Cafe Church, as a monthly event, in place of the lapsed weekly coffee morning, in the North Aisle. Also in September, we held a Harvest service followed by Ploughman's lunch and, in December, we hosted an Advent Sale.

We are very grateful to Sarah Wyman, Richenda Milton-Daws and various other clergy for the services that they have taken during the year, before Rector Bob arrived. On Remembrance Sunday in November, 55 villagers attended a service in the churchyard beside the War Grave.

The 14th century font was repaired, as a chunk of stone had fallen off. Various other repairs are ongoing. Our finances are continuing to struggle due to lower attendances and fewer tax-efficient donations, but these are partly offset by income from some old legacies, which helps us to pay our running costs. These include £7,235 sent to Bristol Diocese for our Parish Share and £500 to North Wilts Mission Association.

The year 2023 has been a year of change and, as ever, we look forward optimistically to 2024.

Philip Carter Valerie Durnford Churchwardens



Walkies!

We are a village of dog-lovers. A new WhatsApp group has been started for any dog-owners who wants might want some company while out on their dog-walk. It's a very informal group, just quickly post that you are leaving at eg. 10am for a 45 minute walk and anyone can contact you to arrange to meet en-route. If you'd like details of how to join the group then just e-mail us at the Grapevine with your mobile number and we'll

put you in touch! (grapevinesn16@aol.com)

Hankerton Village Litter Pick



Thanks to all who joined in the Hankerton Village Litter Pick on Saturday morning, leaving the village tidier and more sparkling than ever!

Contrary to expectations, the sun was out for the whole session and we spent a lovely couple of hours meandering around the village inspecting the verges and hedgerows – and yes, finding some litter!

All enjoyed some lovely coffee and chocolate cake in the church afterwards, courtesy of Sarah Gerald.

The above photograph shows about half the team plus their kit. Thanks once again to all who came along.

Many thanks,
Malcolm Gerald

(And thanks for organising it all Malcolm – Eds)

Wheatsheaf Inn Crudwell

Take away service

Please ring 01666 577739 or

Email tobygregory@aol.com

Available:

Wednesdays, Thursdays, Fridays and Saturdays:
12.00pm to 1.30pm and 5.30pm until 7.00pm
Sunday (roasts only) £13.00: 12.30pm to 1.00pm
Order early to avoid disappointment!

Menu choices:

Teriyaki chicken with rice or chips (£11.25)

Moroccan vegetable Tagine with rice (£10)

Crispy breaded scampi with chips or salad (£11)

6oz Cheeseburger and bacon with chips (£10.25)

Cajun Chicken Caesar salad (£10.50)

Beer battered cod and chips (£11.25)

Chicken Madras Curry with rice and naan bread (£11)

Beef lasagna or vegetable Lasagna with chips (£11)

Lentil and carrot burger, salsa and chunky chips (£10)

Desserts (*to be heated at home)

From £4.00

Ginger sponge with custard*

Bread and Butter Pudding with custard*

Butterscotch ice-cream sundae

Cash or card payments

Local Deliveries by arrangement

See www.wheatsheafcrudwell.co.uk for updates



Services across the Braydon Brook Benefice

All are welcome to attend any of the services taking place across the Benefice



Date	Services in Church	Services on Zoom
Sunday 7th April	9.30am, Holy Communion with Baptism @ Hankerton	
	10am, Friends & Family @ Crudwell	
	11am, Holy Communion @ Oaksey	
	6pm, Evening Prayer @ Ashley	
Sunday 14th April	10am, Benefice Holy Communion @ Oaksey	
Sunday 21st April	9.30am, Holy Communion @ Charlton	6pm Evening Prayer
	11am, Holy Communion @ Minety	
	11am, Matins @ Oaksey	
	5pm, Family Songs of Praise @ Hankerton	
Sunday 28th April	9.30am, Holy Communion @ Ashley	
	9.30am, Morning Praise @ Charlton	
	11am, Holy Communion @ Crudwell	
	11am, Morning Praise @ Minety	
	10.15am Sunday School and 11am, Family Service @ Oaksey	

Mid-Week Services and Events

Monday	Every other week	10am	Bible Study via Zoom
Tuesday	Weekly	9.30am	Morning Prayer via Zoom
Wednesday	10th April (2nd Wed)	10.30am	Coffee & Chat @ Crudwell
	3rd, 10th, 17th April	2pm	Magdalen Moments @ 1 Days Court
Thursday	11th April (2nd Thursday)	9.45am	BCP Communion Service @ Minety
Friday	Weekly	9.30am	Morning Prayer via Zoom
Saturday	6th April (1st Saturday)	11am – 12.30pm	Café Church @ Hankerton

Please visit our website www.braydonbrook.co.uk and **Braydon Brook Churches Facebook Page** to find out more.



Services across the Braydon Brook Benefice

All are welcome to attend any of the services taking place across the Benefice



Date	Services in Church	Services on Zoom
Sunday 5th May	9.30am, Holy Communion @ Hankerton	
	10am, Friends & Family @ Crudwell	
	11am, Holy Communion @ Oaksey	
	4pm, Rogation Sunday Service @ Charlton	
	6pm, Evening Prayer @ Ashley	
Sunday 12th May	10am, Benefice Holy Communion @ Ashley	
Sunday 19th May Pentecost	9.30am, Holy Communion @ Charlton	6pm Evening Prayer
	11am, Holy Communion with Baptism @ Minety	
	11am, Matins @ Oaksey	
	5pm, Family Songs of Praise @ Hankerton	
Sunday 26th May Trinity Sunday	9.30am, Holy Communion @ Ashley	
	9.30am, Morning Praise @ Charlton	
	11am, Holy Communion @ Crudwell	
	11am, Morning Praise @ Minety	
	10.15am Sunday School and 11am, Family Service @ Oaksey	

Mid-Week Services and Events

Monday	Weekly	9.30am	Morning Prayer via Zoom
	Every other week	10am	Bible Study via Zoom
Tuesday	Weekly	9.30am	Morning Prayer in Charlton
Wednesday	8th May (2nd Wed)	10.30am	Coffee & Chat @ Crudwell
Thursday	9th May (2nd Thursday)	9.45am	BCP Communion Service @ Minety for Ascension Day
Friday	Weekly	9.30am	Morning Prayer via Zoom
Saturday	4th May (1st Saturday)	11am – 12.30pm	Café Church @ Hankerton

Please visit our website www.braydonbrook.co.uk and Braydon Brook Churches Facebook

Page to find out more.





Talks & Events - Dates for your Diary!

Tickets available & further information on our website or from the Museum.

<https://www.athelstanmuseum.org.uk/events/>

Athelstan 1100 - - for more details and newsletter please go to:

<https://www.athelstan1100.co.uk>

Wed 17 Apr - Teatime Talk @ 2.30 - **Life in Little Somerford 1954-72**

Wed 1 May - 7pm - **Ben Kane** - **Russia 1812: Napoleon's Greatest Defeat? (See Advert)**

St Aldhelm's Fair Bank Holiday Monday - Museum Stall

Wed 15 May - Teatime Talk @ 2.30 - **Finding Athelstan in Malmesbury**

Wed 19 June - Teatime Talk @ 2.30 - **History of the Warden & Freeman**

Fri 19 July - 7pm - Paul Hill - **King Athelstan, his family & wars that made England.**

August - Walks & Talks during **Carnival** - programme tbc

Petticoat Lane - Museum Stall

Museum Quiz Night - date tbc

Wessex Week Events - 18th-26th October

Weds 30 Nov - 7pm - Jon Hammond - **Halloween**

Museum Shop Sunday - **Sunday 1 December**

Late Night Shopping - first Friday of December – tbc

Hope to see you all there!

Ben Kane Talk

Russia, 1812: Napoleon's Greatest Defeat?

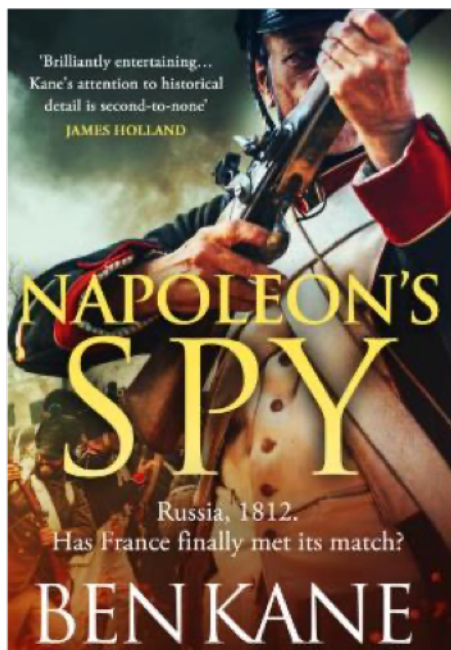
Weds 1 May @ 7pm

Rausing Building

Tickets available now £15 from our website and in the Museum

<https://www.athelstanmuseum.org.uk/event/russia-1812-napoleons-greatest-defeat/>

Ben Kane, author of many historical novels, will talk all about the history behind Napoleon's disastrous invasion of Russia in 1812, and how he came to write his latest novel, *Napoleon's Spy*.



Ben Kane is a veterinarian and avid reader. His visit to the ruins of Merv, in Turkmenistan started an interest in the Roman campaign into Parthia in 53 BC. Later visits to some of the amazing Roman sites and museums along Hadrian's Wall lead him to wonder what the Italian legionaries first posted here must have thought and how the Scottish tribes reacted to the mighty structure which dwarfed anything they'd seen before? His determination to become a writer emerged then, and he started writing military historical fiction not long afterwards. What started as a hobby soon became an obsession, and about four years later *The Forgotten Legion* emerged into the light. He has written many books since then, the latest of which is *Napoleon's Spy*.



REACH OUT

Tell the news to our neighbours, share it with our friends,
reach out to those who don't believe Encourage them,
*"Come back to God, He loves us, and is ready to receive
All our sins and things that give us troubled feelings"* –
When we are reconciled to Him, He will give us healing.

We must trust in God. Through His Love and through
His Word. Shake the dust of adversity - From our feet
and let things be Trust in Him, He does not fail - Will not
leave us to weep and wail If in prayer we concentrate our
thoughts on Him. We can blot out darkness and let His
Light flood in Be grateful for the realisation – That
through His Son's death, we gain salvation

All that He asks of us to do - Is to be loved by Him,

through and through

To be His child

Receive His Peace.

Be reconciled...



New Life, New Hope

Easter came early this year – in March (just), so by the time you read this you may be thinking it is all over.

But actually the Easter Season, the forty days in which we remember the Resurrected Jesus being with his disciples, eating with them, teaching them, restoring their hope and giving them the opportunity to say goodbye well, these forty days are with us for a month and a half. And at the end of that time we pause for another ten days before celebrating the coming of the Holy Spirit at Pentecost. God's Spirit can be with us all, today and always, if we choose to accept that gift.

In these forty days of Easter though, Jesus has a message for his closest followers. In teaching them to live without his bodily presence he lets them know that it's not really 'goodbye'. It's more like 'see you later'.

Through his Resurrection, Jesus has shown them that death is not the end.

Jesus, who has been horribly killed and laid to rest in a borrowed tomb, has defied all expectations. And what he has given us lasts far longer than even a mountain of chocolate eggs. In this Season of Easter, we discover that he is more alive and more fully himself than he has ever been. Death has been defeated. Nothing in earth or heaven, in time or beyond it, will ever be the same again.

We can have hope now. No matter how dark the world seems, good will triumph in the end. Life will spring from the tomb, morning will disperse even the darkest night.

Make no mistake, Easter isn't over. The season of New Life has only just begun!

Richenda Milton-Daws
Licensed Lay Minister



The
GEORGE
Equine Clinic

01666 826456

24 HOUR EMERGENCY COVER
www.georgevetgroup.co.uk



 Find us on
Facebook

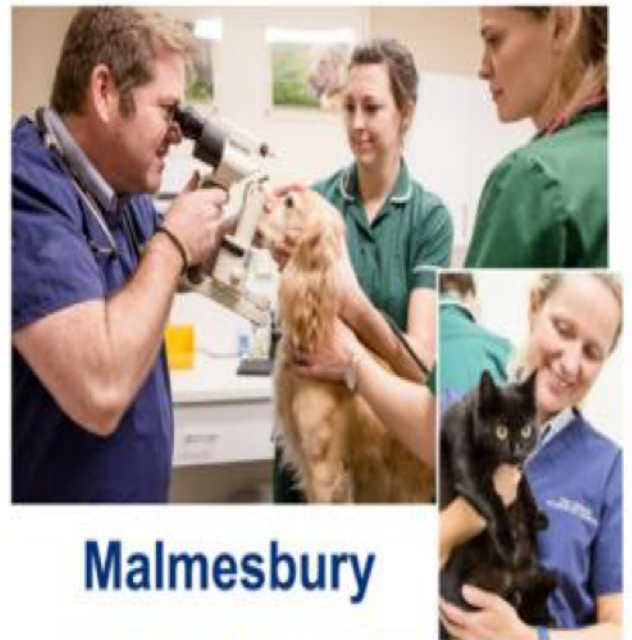


The
GEORGE
Veterinary Hospital



**AROUND THE CLOCK
EMERGENCY CARE**

www.georgevetgroup.co.uk



Malmesbury

01666 823165